

"Your Home Away From Home"

Add a touch of home to your stay in the Des Moines, Iowa area at Sterling Hotel and Suites. Located just off I-80 and I-235 in the suburb of Clive, we welcome you to discover a relaxing, cottage-style hotel.

Our 112 Studio and two-level Penthouse Suites are designed to feel more like private apartments than hotel suites. All of our suites are equipped with full size kitchens, fireplaces and spacious living areas.

Whether you're doing business in the Des Moines area or traveling with the family, you'll settle into your routine with ease.

Start your morning in the Clubhouse with our complimentary breakfast and enjoy the following amenities: complimentary Wi-Fi, a seasonal outdoor pool, free access to a nearby fitness center, on-site laundry facility, one-day dry cleaning services, and pet-friendly suites.



Meeting Rooms:

Formal Meeting Room: Our primary meeting space accommodates up to 40 guests in a wide range of floor plans, including classroom, theater, U-shaped seating, and conference-style.

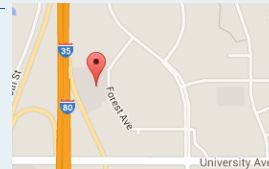
Clubhouse: This bright, open-plan space features large windows and is ideal for bridal showers, baby showers, birthday parties, and family gatherings of up to 35 guests. Outside catering is allowed.

Conference Room: Accommodating up to six guests, this room is ideal for smaller conferences and meetings. Audiovisual equipment and support are available.

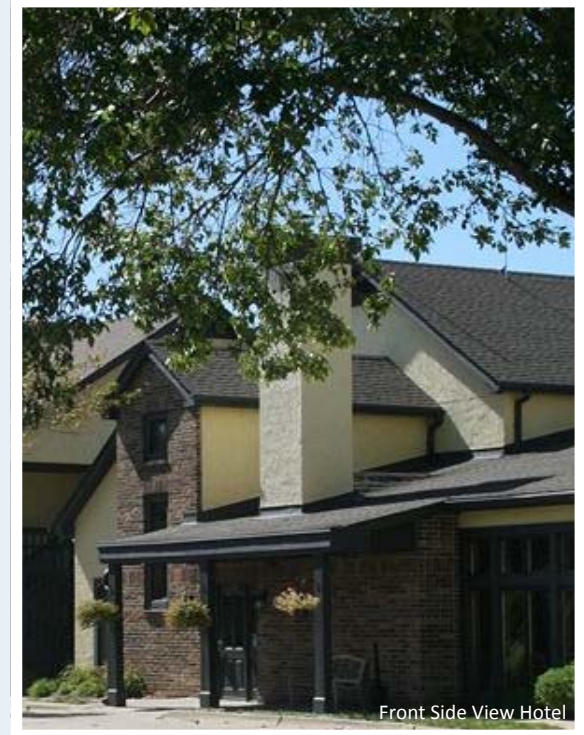
Sterling Hotel and Suites

11428 Forest Avenue
Clive, Iowa 50325

Phone: 515-223-7700
Fax: 515-223-7222



General Inquires E-mail: Info@sterlinghotellandsuites.com
Sales Inquires E-mail: Sales@sterlinghotellandsuites.com
Internet: www.sterlinghotellandsuites.com



"Your Home Away From Home"

Studio Queen Suite (500 sq. Feet)

One-level suites with a Queen Bed and separate living room space. The bathroom is a split bath; the sink and vanity are completely separate from the stool and shower.

Studio King Suite (650 sq. Feet)

One-level suites with a King Bed and separate living room space. The bathroom is a split bath; the sink and vanity are completely separate from the stool and shower.

Studio Double Queen Suite (650 sq. Feet)

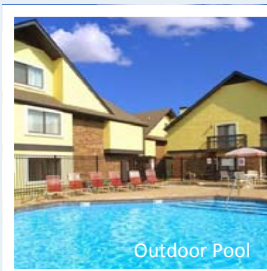
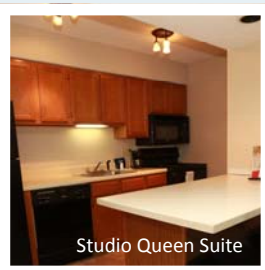
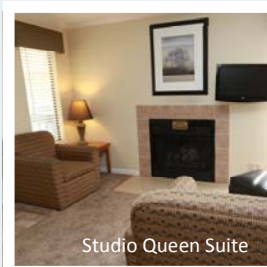
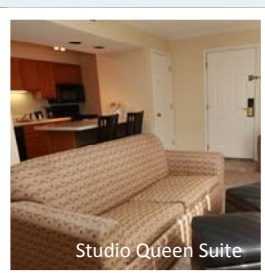
One-level suites with two Queen Beds and separate living room space. The bathroom is a split bath; the sink and vanity are completely separate from the stool and shower.

Penthouse King Queen Suite (900 sq. Feet)

Two-level suites, with an upstairs loft bedroom with vaulted ceilings, a Queen Bed, television, and full bathroom. The downstairs offers a master bedroom with a King Bed, separate living room space and a second full bathroom.

All Suites

Have a pullout sofa sleeper and full appliance kitchen including a full size refrigerator, stove, oven, dishwasher, microwave, and coffee maker.



Amenities

With complimentary high-speed Wi-Fi in all suites and throughout the hotel, you can catch up on work or emails just about anywhere, even when lounging by the outdoor pool.

Served in the comfy Clubhouse Lobby, our free breakfast has all your favorites to jump start your day.

We also realize that a busy travel schedule doesn't have to interrupt your healthy lifestyle. That's why we provide free guest access to a nearby fitness center.

Successful executive trips. Pet-friendly family vacations. Long-term stays with all the conveniences of home. No matter what brings you to the Des Moines, Iowa area, you'll enjoy warm, personalized service at Sterling Hotel and Suites.

- > ATM and Vending in Clubhouse and Guest laundry
- > Fire Logs, Matches, Toiletries, Laundry Detergent, and Other Items available for purchase
- > Meeting and Event Space
- > In-Room Fireplaces
- > Complimentary Access to a Local Fitness Center
- > Business Center with Computer, Fax, and Printer
- > 24-Hour Guest Laundry Facility
- > Dry Cleaning Services
- > Complimentary Parking
- > Pet-Friendly Accommodations
- > Cookies and Coffee in Lobby
- > Complimentary Breakfast Monday-Friday from 6:30 a.m. to 9 a.m. and on Saturday-Sunday from 6:30 a.m. to 10:00 a.m.
- > Seasonal Pool hours: 10 a.m. to 10 p.m. (Open between Memorial Day and Labor Day)
- > Daily 24-Hour Front Desk